



**HIGH HALSTOW NEIGHBOURHOOD PLAN**  
**IMPORTANT VIEWS – SUPPORTING DOCUMENT**  
**2020 –2037**

---

The High Halstow Neighbourhood Plan identifies a number of key views in and around the Parish which contribute to the character and identity of the area.

This report sets out these keys views. It maps them, provides info on each, and includes photos from each to help illustrate the value of each view. Photos from each view point are dated.

# MAP OF VIEW POINTS



## KEY

- ① Ropers Green Lane towards Belluncle Halt, Kingsnorth powerstation and River Medway
- ② Ropers Lane Roundabout towards Solomon Farm
- ③ Chattenden and Upnor railway line footpath towards High Halstow Village
- ④ Christmas Lane across Solomons Farm
- ⑤ From public right of way RS45 across Solomons Farm toward River Thames
- ⑥ Wybournes Way towards River Thames and Lodge Hill Wood
- ⑦ Southern Water Spring, Cooling Road, towards Dalham Farm, Northward Hill and North Kent Marshes
- ⑧ Lipwell Hill towards Buckhole Farm and North Kent Marshes
- ⑨ RSPB Viewpoint, Northward Hill, towards North Kent Marshes and Cooling Radio Station
- ⑩ Forge Common towards the River Medway, St. Mary Hoo and River Thames
- ⑪ Bessies Land across the Thames Estuary
- ⑫ Manor Way, in the Marsh, across the Marshes, Shades House and Northward Hill
- ⑬ Saltfleet Flats, across the Marshes, River Thames, Northward Hill and Container Point

## DESCRIPTION OF VIEW POINTS

	Latitude	Longitude	General Direction	Approx width of view	Features seen	Importance
<b>1. Intersection of Ropers Green lane with RS44</b>	51.441423	0.582082	West	180°	Belluncle Halt, Kingsnorth power station' River Medway	The southern extremity of High Halstow Parish with views to the industrial site of Hoo St Werburgh once MOD land
<b>2. Start of RS46 at Ropers Lane roundabout</b>	51.436501	0.567341	North West	90°	Solomons Farm' site of Chattenden & Upnor railway line, south flank of High Halstow	An important feature of High Halstow is its prominent position on the eastern escarpment of the North Kent Downs overlooking the North Kent Marshes and River Thames. A branch line linked Sharnal Street Station with the oil refinery at Berry Wiggins which closed in 1977. Berry Wiggins had purchased the site from the MOD which used the site for an Air Ship base in WWI. Solomons Farm and buildings mark the railway intersection between the Hundred of Hoo Railway and the old Chattenden & Upnor, and was the main railway connection for Lodge Hill the Munitions storage facility for Chatham Naval Dockyard. The working Farm included an example of one of the original bridges across the railway line and access for Public Rightof Way (no. RS347) and is adjacent to the site of the old Sharnal Street railway station and two further examples of railway bridges, at one time, carrying the main road traffic on and off the peninsula. In recent years this valley has been used to route the main electrical feed from the Peninsula's power stations.

## DESCRIPTION OF VIEW POINTS

	Latitude	Longitude	General Direction	Approx width of view	Features seen	Importance
<b>3. Intersection of RS46 with south of old Chattenden and Upnor railway line</b>	51.439764	0.563543		360°	Site of old Chattenden railway views of Solomons farm, the village and farmland	Provides for a historical look at the past when munitions were made on the peninsula. This railway line would have been the height of activity during the two world wars. This view point is situated on the site of the old Chattenden & Upnor branch line who's route is visible Westwards towards the site of the old bridge at Dux Court Road and Lodge Hill beyond.
<b>4. RS46 Rear of Christmas Lane</b>	51.446304	0.565667	South	180°	Views across Solomons Farm, Orchards, Dux Court road towards Ratcliffe Highway	This shows the 'green wedge' between High Halstow and Hoo St Werburgh which is important to retain to reinforce the separate sense of identity of these places. It provides a view across Solomons Farm where the route of the Hundred of Hoo Railway and its bridges across Dux Court Road. The line of the Chattenden & Upnor branch is visible as well as the old site of Sharnal Street Station.
<b>5. From RS45 highest point</b>	51.442279	0.550518	North	360°	View of the south side of the village across orchards. Solomons farm, Wybournes Farm, River Thames towards Gravesend, Lodge Hill	Views give an indication of the isolation of High Halstow village from other major communities surrounded by the farms that initially made the community

## DESCRIPTION OF VIEW POINTS

	Latitude	Longitude	General Direction	Approx width of view	Features seen	Importance
<b>6. Intersection of Wybournes way with western boundary of Village</b>	51.44563578	0.539488792	West	360°	Solomons Farm. River Thames. Lodge Hill Wood Spendif towards Higham.	An important Landscape feature here shows the escapement of the North Kent Downs and its connection with the Marsh and the river Thames Beyond
<b>7. Adjacent to the Southern water Spring on Cooling Road</b>	51.448859	0.552471	North	270°	Dalham Farm, Dalham Farm SSSI Northward Hill, Buck hole Farm East borough Farm River Thames North Kent Marshes SPAs	Shows clearly the relationship between Northward Hill and the North Kent Marsh, and specifically how this creates a natural roost in the wooded hill for the colony of breeding Herons and Little Egrets close to the rich feeding ground of the Marsh.
<b>8. Top of Lipwell Hill at boundary of Village</b>	51.45232211	0.545368195	North west	270°	Buck hole Farm. East well Farm North Kent Marshes, River Thames.	Open view of the marsh land contrasting with the high ground of Northwood Hill. Also shows the barrenness of the marshes compared to the major international port and oil terminal on the Essex side of the River Thames.

## DESCRIPTION OF VIEW POINTS

	Latitude	Longitude	General Direction	Approx width of view	Features seen	Importance
<b>9. On The Saxon Shoreway half way up Northward hill at RSPB Viewpoint</b>	51.458366	0.555625	North West	180°	North Kent Marshes SPA's River Thames Eastborough Farm Cooling Radio station	View point gives a birds eye insight of the view of the Marsh and river, and the importance of Northward Hill as a protected roost. Probably the best view of the Cooling Radio station which is otherwise shielded from view.
<b>10. Forge Common</b>	51.455291	0.565238	South	180°	River Medway, St Mary Hoo.River Thames	Located at on the south side top of Northward Hill, the village sits seemingly nestled amongst woodlands across the top of which glimpses of the River Medway are possible.
<b>11. On Bessies Land at the Spring on top of the hill</b>	51.458713	0.577168	North	270°	Thames Estuary, St Mary Marsh, Halstow Marsh, Decoy, Decoy Farm. Swigshole House. Canvey island, Southend Tilbury, Gravesend.	Walking North along Bessies Lane to this view it is clear to see the extent of the Cliffe, Cooling, Halstow, St. Mary's and Allhallows marshes to the North and the Medway Estuary marshes to the South and the part Northward hill has to play. Much of the peninsula and its surrounding intertidal habitat is heavily protected under the Bern Convention. Like the North Norfolk coast the Peninsula forms an important and vital link on one of only five migratory routes for Artic wildfowl, it plays host to over 300,000 wintering wildfowl every winter.

## DESCRIPTION OF VIEW POINTS

	Latitude	Longitude	General Direction	Approx width of view	Features seen	Importance
<b>12. On Manor Way in the Marsh</b>	51.474861	0.569572		360°	In the heart of Halstow Marsh SPA, Northward Hill, Shades House, St Mary's Marsh	Walking Manor Way you get a feeling and view of the importance of the grazing marsh so vital for wintering wildfowl when the tide rises and the inertial habitat becomes hidden.
<b>13. Saltfleet flats</b>	51.485338	0.552063		360°	River Thames Egypt Bay The Halstow Marshes, Cooling Marshes Northward Hill National Nature reserve Shades House Container port.	Sitting and watching wildfowl feeding the waters edge as the tide rises then making the short flight over the sea wall to continue uninterrupted feeding on the grazing marsh, give an insight to the importance of the seemingly barren and forbidding landscape. This landscape as a raw beauty once so famously described by Charles Dickens in his open words of Great Expectations, "Ours was the marsh country, down by the river, within, as the river wound, twenty miles of the sea. My first most vivid and broad impression of the identity of things, seems to me to have been gained on a memorable raw afternoon towards evening. At such a time I found out for certain, that this bleak place overgrown with nettles was the churchyard; ....; and that the dark flat wilderness beyond the churchyard, intersected with dykes and mounds and gates, with scattered cattle feeding on it, was the marshes; and that the low leaden line beyond, was the river; and that the distant savage lair from which the wind was rushing, was the sea"



## IMAGES FROM VIEW POINTS : VIEW POINT 1

MAY 18, 2022

Ropers green lane /RS44

The southern extremity of High Halstow Parish with views to the industrial site of Hoo St Werburgh once MOD land. 180° views of **Belluncle Halt, Kingsnorth power station' River Medway**





## IMAGES FROM VIEW POINTS : VIEW POINT 2

MAY 18, 2022

### Start of RS46 Ropers lane

An important feature of High Halstow is its prominent position on the eastern escarpment of the North Kent Downs overlooking the North Kent Marshes and River Thames. A branch line linked Sharnal Street Station with the oil refinery at Berry Wiggins which closed in 1977. Berry Wiggins had purchased the site from the MOD which used the site for an Air Ship base in WWI.

Solomons Farm and buildings mark the railway intersection between the Hundred of Hoo Railway and the old Chattenden & Upnor, and was the main railway connection for Lodge Hill the Munitions storage facility for Chatham Naval Dockyard. The working Farm included an example of one of the original bridges across the railway line and access for Public Right of Way (no. RS347) and is adjacent to the site of the old Sharnal Street railway station and two further examples of railway bridges, at one time, carrying the main road traffic on and off the peninsula. In recent years this valley has been used to route the main electrical feed from the Peninsula's power stations. **90° views of Solomons Farm' site of Chattenden & Upnor railway line, south flank of High Halstow.**



**IMAGES FROM VIEW POINTS : VIEW POINT 2**





## IMAGES FROM VIEW POINTS : VIEW POINT 3

MAY 27, 2022

intersection of RS46 with south of old Chattenden and Upnor railway

Provides for a historical look at the past when munitions were made on the peninsula. This railway line would have been the height of activity during the two world wars. This view point is situated on the site of the old Chattenden & Upnor branch line who's route is visible Westwards towards the site of the old bridge at Dux Court Road and Lodge Hill beyond.

**360° views of Site of old Chattenden railway views of Solomons farm, the village and farmland**



**IMAGES FROM VIEW POINTS : VIEW POINT 3**





## IMAGES FROM VIEW POINTS : VIEW POINT 4

MAY 27, 2022

### RS 46 Rear of Christmas lane

This shows the 'green wedge' between High Halstow and Hoo St Werburgh which is important to retain to reinforce the separate sense of identity of these places. It provides a view across Solomons Farm where the route of the Hundred of Hoo Railway and its bridges across Dux Court Road. The line of the Chattenden & Upnor branch is visible as well as the old site of Sharnal Street Station. **180° views of Solomons Farm, Orchards, Dux Court road towards Ratcliffe Highway**



## IMAGES FROM VIEW POINTS : VIEW POINT 5

MAY 27, 2022

From RS 45 highest point

Views give an indication of the isolation of High Halstow village from other major communities surrounded by the farms that initially made the community. **360° views of the south side of the village across orchards. Solomons farm, Wybournes Farm, River Thames towards Gravesend, Lodge Hill**





**IMAGES FROM VIEW POINTS : VIEW POINT 5**





**IMAGES FROM VIEW POINTS : VIEW POINT 5**

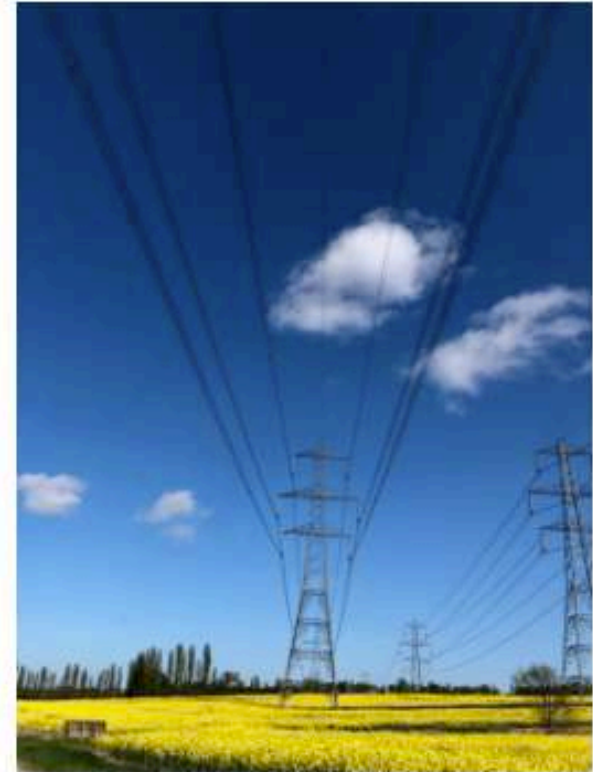
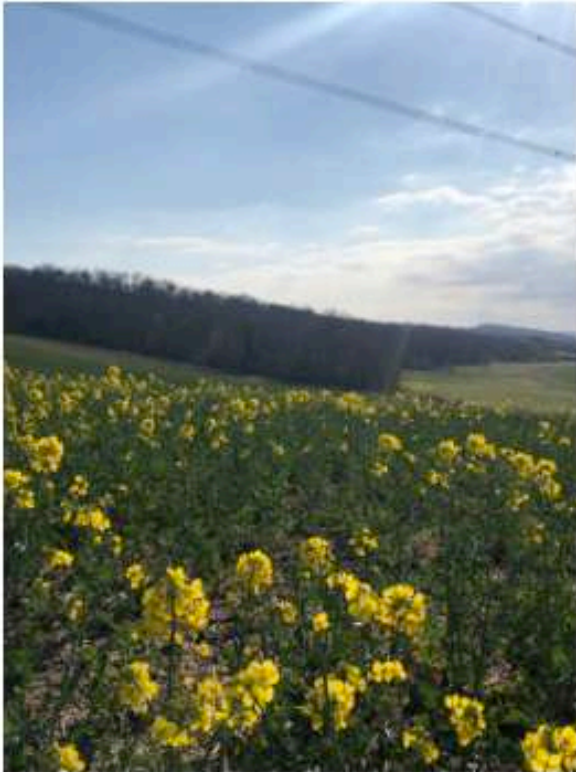


## IMAGES FROM VIEW POINTS : VIEW POINT 6

MAY 27, 2022

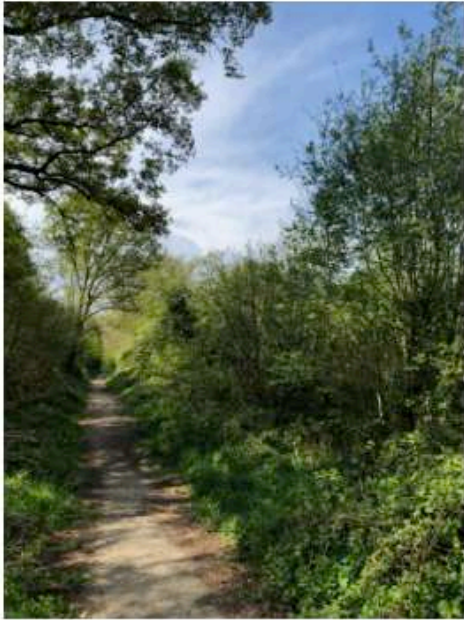
### Intersection of Wybournes Way with western boundary of village

An important Landscape feature here shows the escapement of the North Kent Downs and its connection with the Marsh and the river Thames Beyond. **360° views River Thames. Lodge Hill Wood Spendif towards Higham.**





IMAGES FROM VIEW POINTS : VIEW POINT 6

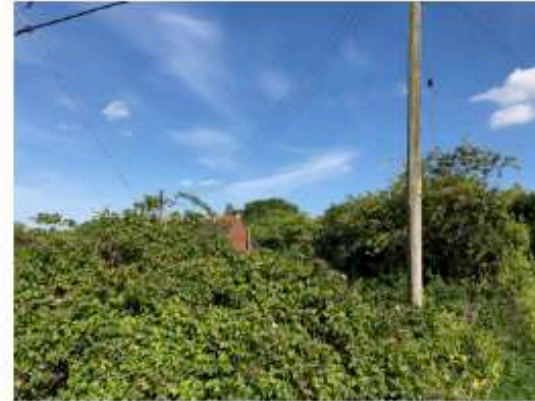


## IMAGES FROM VIEW POINTS : VIEW POINT 7

MAY 27, 2022

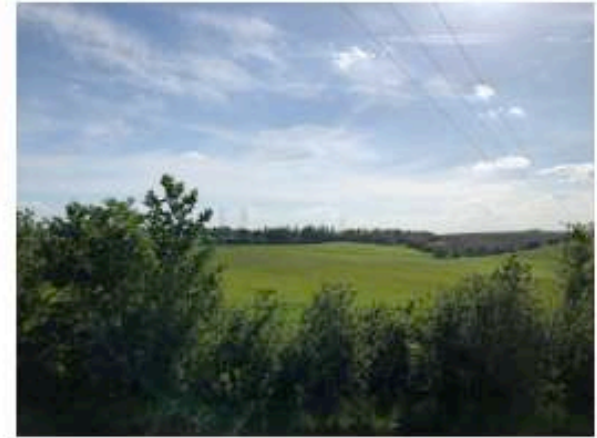
Adjacent to Southern water spring on Cooling road

Shows clearly the relationship between Northward Hill and the North Kent Marsh, and specifically how this creates a natural roost in the wooded hill for the colony of breeding Herons and Little Egrets close to the rich feeding ground of the Marsh. **270° views of Dalham Farm, Dalham Farm SSSI Northward Hill, Buck hole Farm East borough Farm River Thames North Kent Marshes SPAs**





**IMAGES FROM VIEW POINTS : VIEW POINT 7**

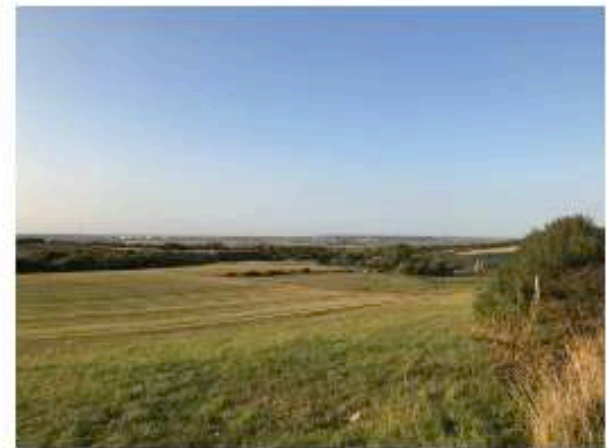
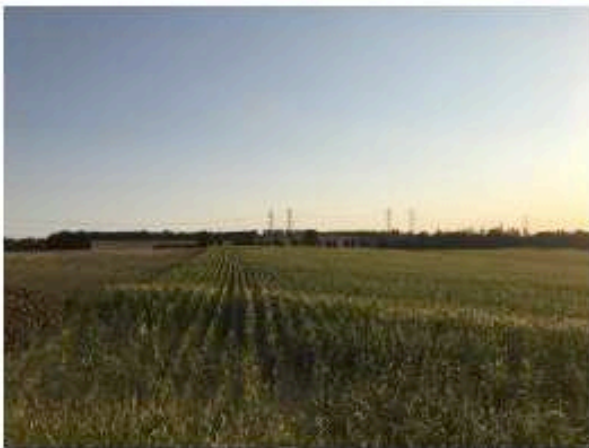


## IMAGES FROM VIEW POINTS : VIEW POINT 8

MAY 27, 2022

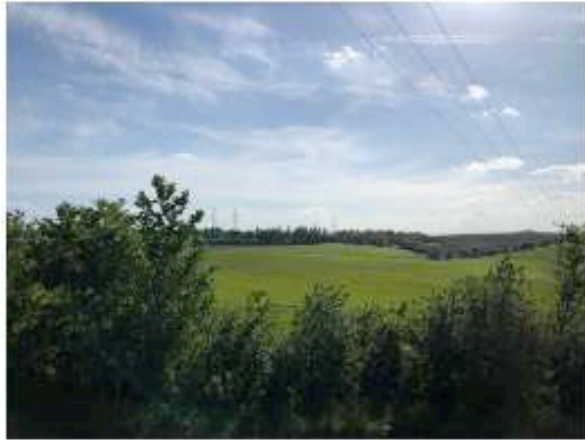
### Top of Lipwell Hill

Open view of the marsh land contrasting with the high ground of Northwood Hill. Also shows the barrenness of the marshes compared to the major international port and oil terminal on the Essex side of the River Thames. **270' Buckhole Farm.**  
**East well Farm North Kent Marshes, River Thames.**





**IMAGES FROM VIEW POINTS : VIEW POINT 8**



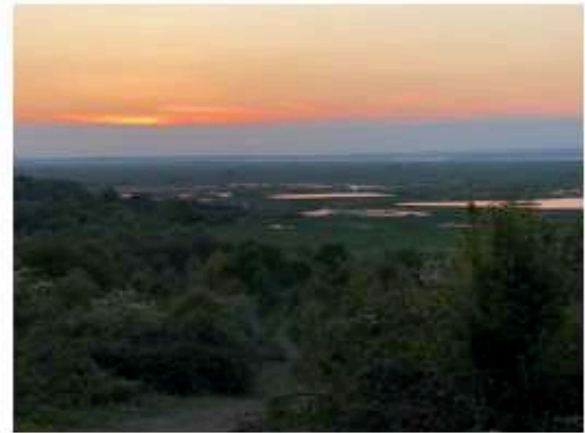


## IMAGES FROM VIEW POINTS : VIEW POINT 9

MAY 27, 2022

On Saxon shore way half way up Northward Hill at RSPB view point

View point gives a birds eye insight of the view of the Marsh and river, and the importance of Northward Hill as a protected roost. Probably the best view of the Cooling Radio station which is otherwise shielded from view. **180° views of North Kent Marshes SPA's River Thames Eastborough Farm Cooling Radio station**

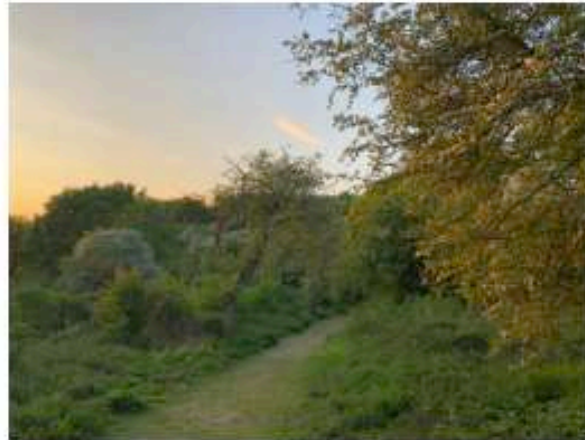


## IMAGES FROM VIEW POINTS : VIEW POINT 10

MAY 27, 2022

### Forge Common

Located at on the south side top of Northward Hill, the village sits seemingly nestled amongst woodlands across the top of which glimpses of the River Medway are possible. **270° views of River Medway, St Mary Hoo.River Thames.**





IMAGES FROM VIEW POINTS : VIEW POINT 10



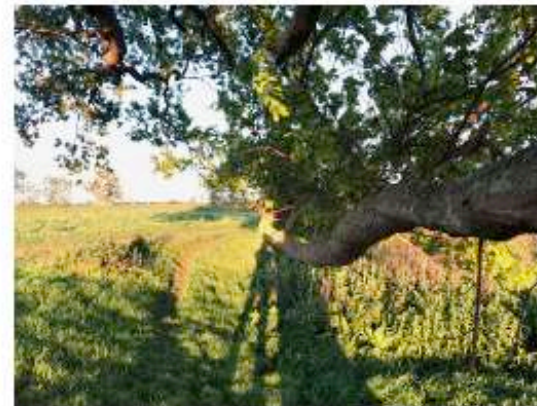
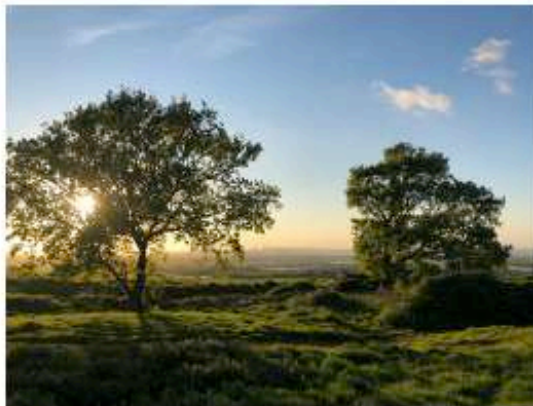
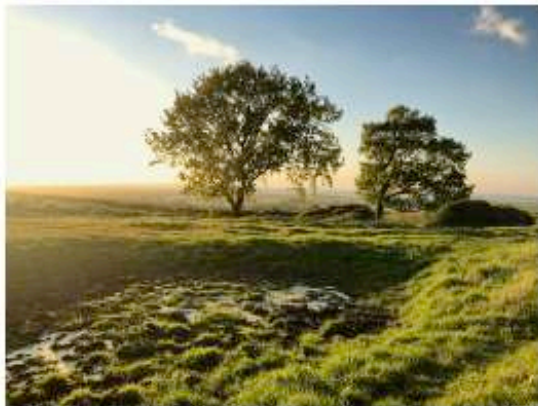


## IMAGES FROM VIEW POINTS : VIEW POINT 11

MAY 27, 2022

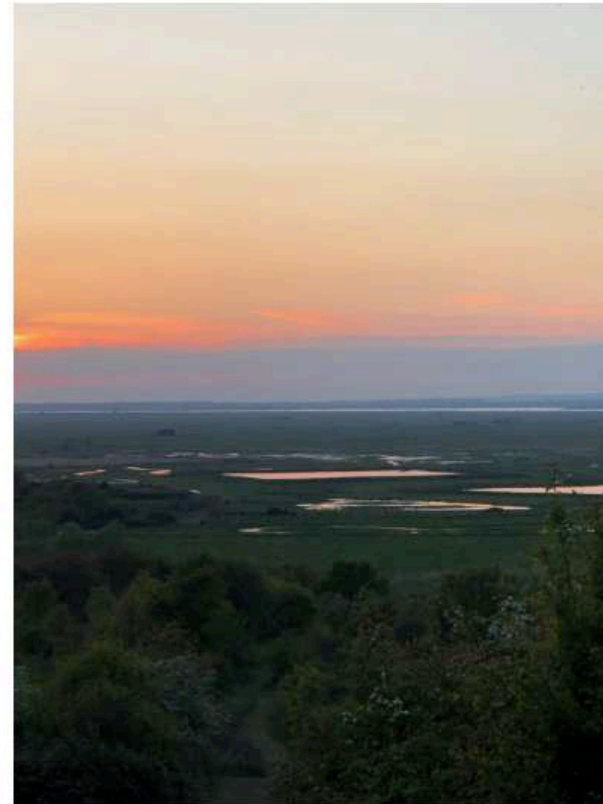
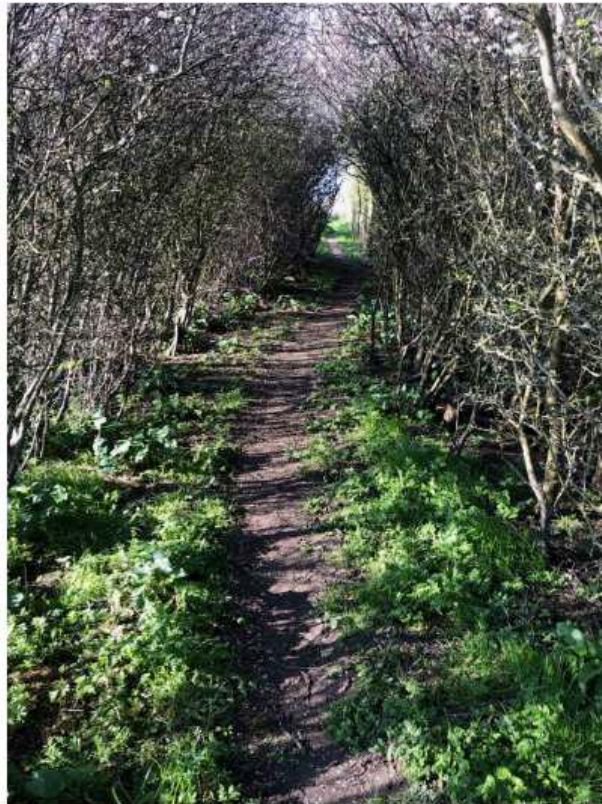
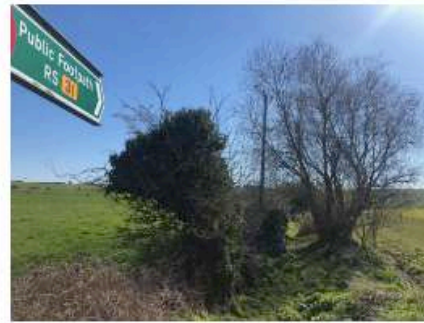
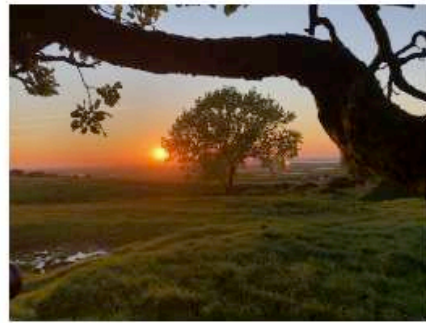
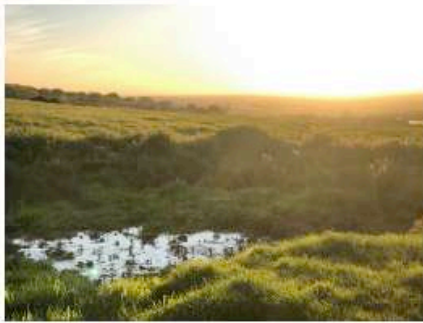
On Bessies lane RS31 at the spring on top of the hill

Walking North along Bessies Lane to this view it is clear to see the extent of the Cliffe, Cooling, Halstow, St. Mary's and Allhallows marshes to the North and the Medway Estuary marshes to the South and the part Northward hill has to play. Much of the peninsula and its surrounding intertidal habitat is heavily protected under the Bern Convention. Like the North Norfolk coast the Peninsula forms an important and vital link on one of only five migratory routes for Artic wildfowl, it plays host to over 300,000 wintering wildfowl every winter. **270° views of Thames Estuary, St Mary Marsh, Halstow Marsh, Decoy, Decoy Farm. Swigshole House. Canvey island, Southend Tilbury, Gravesend.**





**IMAGES FROM VIEW POINTS : VIEW POINT 11**

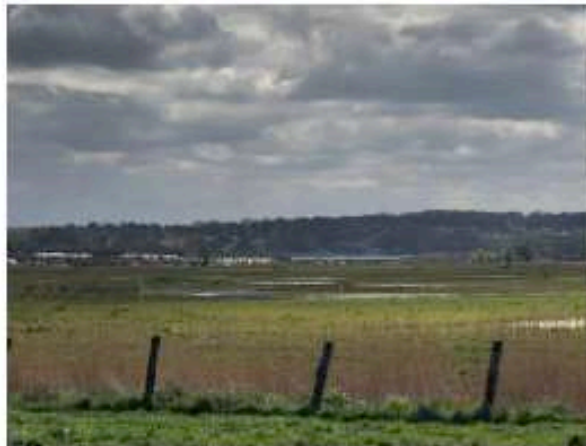


## IMAGES FROM VIEW POINTS : VIEW POINT 13

MAY 27, 2022

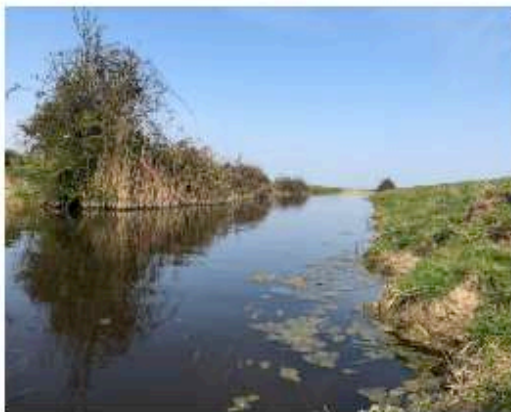
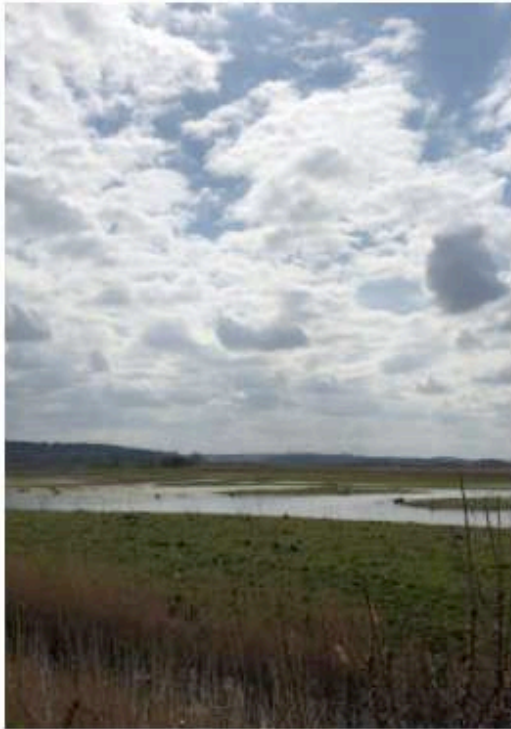
### On Manor Way in the marsh

Walking Manor Way you get a feeling and view of the importance of the grazing marsh so vital for wintering wildfowl when the tide rises and the inertial habitat becomes hidden. **360° views of the heart of Halstow Marsh SPA, Northward Hill, Shades House, St Mary's Marsh.**





IMAGES FROM VIEW POINTS : VIEW POINT 13





## IMAGES FROM VIEW POINTS : VIEW POINT 13

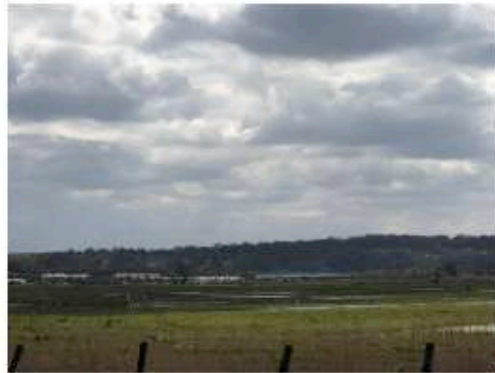
MAY 27, 2022

### Saltfleet flats SPA

Sitting and watching wildfowl feeding the waters edge as the tide rises then making the short flight over the sea wall to continue uninterrupted feeding on the grazing marsh, give an insight to the importance of the seemingly barren and forbidding landscape. This landscape as a raw beauty once so famously described by Charles Dickens in his open words of Great Expectations, "Ours was the marsh country, down by the river, within, as the river wound, twenty miles of the sea. My first most vivid and broad impression of the identity of things, seems to me to have been gained on a memorable raw afternoon towards evening. At such a time I found out for certain, that this bleak place overgrown with nettles was the churchyard; ....; and that the dark flat wilderness beyond the churchyard, intersected with dykes and mounds and gates, with scattered cattle feeding on it, was the marshes; and that the low leaden line beyond, was the river; and that the distant savage lair from which the wind was rushing, was the sea" **360° views of River Thames Egypt Bay The Halstow Marshes, Cooling Marshes Northward Hill National Nature reserve Shades House Container port.**



**IMAGES FROM VIEW POINTS : VIEW POINT 13**



High Halstow Parish Council

## **Neighbourhood Plan for High Halstow, 2020-2037**

Important Views – Supporting Document

---



High Halstow Parish Council

50 Pepys Way

Strood

Rochester

Kent, ME2 3LL

[www.highhalstow-pc.gov.uk](http://www.highhalstow-pc.gov.uk)